

2026

# Kitimat

## *Living Guide!*

Kitimat  
*Now*

# TABLE OF CONTENTS

<b>YOU CHOSE MORE</b>	<b>3</b>	Community Groups & Clubs	25
Welcome To Kitimat	3	Important Information	25
History & Culture	4		
<b>IMMIGRANT &amp; INTERPROVINCIAL NEWCOMERS SUPPORT</b>	<b>7</b>	<b>EDUCATION &amp; CHILDCARE</b>	<b>26</b>
Provincial Information	7	Schools	26
Kitimat's Welcoming Communities Program	8	Childcare	26
Kitimat Community Services Society	8	Post Secondary	27
Settling in Check-list	8	<b>HEALTH &amp; WELLNESS SERVICES</b>	<b>28</b>
<b>ECONOMY &amp; EMPLOYMENT</b>	<b>10</b>	Hospitals & Clinics	28
Employment	10	Mental Health Support Services	30
Entrepreneurship	11	Senior Homes & Assisted Living	31
<b>HOUSING</b>	<b>12</b>	Pharmacies	31
Housing Taxes & Support	12	<b>PUBLIC SERVICES</b>	<b>32</b>
How to Find Housing	12	Emergency Services	32
Neighbourhoods	13	Social Supports	33
<b>TRANSPORTATION</b>	<b>14</b>	Other Public Services	33
Transportation Options	14	Garbage & Recycling	34
<b>ENTERTAINMENT &amp; RECREATION</b>	<b>15</b>	<b>PLACES OF WORSHIP</b>	<b>35</b>
Arts & Culture	15	<b>LIFE IN NORTHWEST BC</b>	<b>36</b>
Outdoor Activities	16	Everything You Need	36
Indoor Activities	21	Key NWBC Cities Close to Kitimat	37
Eat & Drink	23	Top Regional Events & Celebrations	38
Shopping & Services	24	<b>STAY CONNECTED WITH KITIMAT</b>	<b>40</b>

Find more at [kitimatbound.ca](http://kitimatbound.ca)

# YOU CHOSE *More!*

Life should be lived to its fullest. Time spent waiting is time spent wishing. Wishing for more. More fun, more excitement, more connection, more opportunity. More of the things we love, and less of the obligations that get in the way. Thank you for choosing to live in Kitimat, where you have the opportunity to **choose more.**

## Welcome to Kitimat

Kitimat is a coastal community of about 9,000 people located in the captivating beauty of Northwest BC's stunning and rugged landscape. Our community sits at the head of the Douglas Channel next to the Kitimat River and is surrounded by mountains.

Kitimat is abound with natural opportunities. Beyond being situated in a spectacular natural setting which provides ample opportunity for recreation and enjoyment, we have a growing local economy that provides abundant employment and business opportunities. Since its inception, Kitimat has been a key pillar of the regional and provincial economy. Our robust industrial sector translates to high paying employment and business opportunities.

Our planned community provides comfortable, relaxed living with everything you and your family need from preschool to retirement including a variety of housing options. Abundant green spaces, an extensive walkway system and carefully balanced residential, commercial and industrial areas add to Kitimat's livability. We have modern health care facilities and the average commute to work takes only minutes. Indoor and outdoor recreation facilities and surrounding wilderness provide plenty of opportunity for an active, outdoor, coastal lifestyle.

# History & Culture

Kitimat is derived from Git-a-maat (Kitamaat), a Tsimshian description of the Haisla, which means “People of the Snow.” Prior to colonization, the Kitamaat band of the Douglas and Devastation channels inhabited the unceded territory that Kitimat is now situated on.

## HAISLA NATION

The Haisla, meaning “dwellers downriver,” have a rich culture and history and have occupied lands in Northwest BC for over 9,000 years. Today, about 700 of their 2,023 members live in Kitamaat Village (about 10 km from Kitimat). The modern day Haisla Nation is an amalgamation of two historic bands: the Kitamaat of the Douglas and Devastation channels and the Kitlope of the upper Princess Royal Channel and Gardner Canal.

Living and working on the land and water has always been fundamental to the Haisla way of life. They have lived off the land and water resources on their traditional territory for thousands of years, and are committed to the preservation of those resources for future generations.

The Haisla Nation Council has shown support for respectful, equitable, and sustainable development on their traditional territory. They have welcomed the LNG industry onto their territory by supporting LNG Canada, the proposed Kitimat LNG project, and through the development of their own Cedar LNG project, which in 2024 announced its positive Final Investment Decision. Throughout the process of LNG speculation and development, the Haisla have remained committed to protecting the environment, preserving the area’s natural assets, and expanding opportunities for their members.

For more information on the Haisla and Kitamaat Village, please visit the official Haisla Nation website: [haisla.ca](https://haisla.ca)

## DISTRICT OF KITIMAT

Kitimat was built in the 1950s on the unceded territory of the Haisla Nation to support construction and operation of a world-class Alcan aluminum smelter. Our community was designed by renowned city planner Clarence Stein to facilitate an environment that would attract and retain workers. Our history is steeped in multiculturalism as the developing community attracted workers from around the world. Kitimat remains a welcoming and diverse place to reside as natural opportunities continue to inspire workers and families from across the globe to make Kitimat their home.

Over the years, other industries, including forestry, pulp and paper, and methanol production have made Kitimat their home. In October 2018, the energy sector arrived when the decision was made by LNG Canada to develop a \$40B LNG export facility in Kitimat. This project is the single largest private sector investment in Canadian history. The investment is a case of history repeating itself, as Alcan’s investment in the Kitimat aluminum smelter was the single largest private investment in Canada’s history at the time. And now, with the 2024 announcement of Cedar LNG’s positive Final Investment Decision, Kitimat has become an integral location for Canada’s growing energy export sector.

### ART IS A MAINSTAY OF HAISLA CULTURE

The Haisla Nation has produced a long lineage of talented and creative artists, who work to preserve traditional methods and craft new techniques.





# IMMIGRANT & INTERPROVINCIAL NEWCOMERS SUPPORT

Moving someplace new can be challenging. There are excellent resources and supports available to you as a newcomer to Kitimat, both locally and from the province of British Columbia.

## Provincial Information

The **B.C. Newcomers' Guide** provides comprehensive information from the province to ease your transition. You'll find information on:

- Finding a place to live
- Language services
- Public transportation
- School registration
- Opening a bank account
- How to apply for a BC Services card
- Finding medical services
- Assistance for those that require extra support

The guide is available in various languages: Arabic, Chinese Simplified, Chinese Traditional, Dari, Farsi, French, Korean, Punjabi, Russian, Spanish, Tagalog, Ukrainian and English.

Visit [welcomebc.ca](http://welcomebc.ca) for your copy of the guide.

## Welcome to Kitimat Club

This is a bi-monthly gathering of newcomers and community old timers, who gather to share information on locally-available community services. It also provides the opportunity to connect with others over snacks and coffee.

Kitimat Chamber of Commerce, 2109 Forest Avenue

Phone: 250-632-6294

[kitimatclub.ca/welcome-to-kitimat-club-2](http://kitimatclub.ca/welcome-to-kitimat-club-2)

## Kitimat Community Services Society

Literacy support (English as a second language) is available as well as learning opportunities, immigration settlement assistance and ESL tutoring to adults 19 years and older.

103A - 370 City Centre

Phone: 250-632-9107

Email: [admin@kitimatcommunityservices.ca](mailto:admin@kitimatcommunityservices.ca)

[kitimatcommunityservices.ca](http://kitimatcommunityservices.ca)

# To-Do

Settling in Checklist	Interprovincial Newcomer	New Immigrant
Register for Medical Service Plan (MSP) <sup>1</sup>	<input type="radio"/>	<input type="radio"/>
Apply for a BC driver's licence <sup>2</sup>	<input type="radio"/>	<input type="radio"/>
Book your BC driver's licence road test	N/A	<input type="radio"/>
Apply for a Social Insurance Number (SIN) <sup>3</sup>	N/A	<input type="radio"/>
Find housing <i>see page 12</i>	<input type="radio"/>	<input type="radio"/>
Register vehicle with Insurance Company British Columbia (ICBC) <sup>4</sup>	<input type="radio"/>	<input type="radio"/>
Purchase insurance (medical, home, vehicle, etc.) <sup>5</sup>	<input type="radio"/>	<input type="radio"/>
Register your children in school <i>see page 26</i>	<input type="radio"/>	<input type="radio"/>
Apply for the Child Tax Benefit for children under 18 years old <sup>6</sup>	N/A	<input type="radio"/>
Register at a family doctor <i>see page 28</i>	<input type="radio"/>	<input type="radio"/>
Purchase a pet licence	<input type="radio"/>	<input type="radio"/>
Open a bank account	N/A	<input type="radio"/>

## 1. MEDICAL SERVICE PLAN (MSP)

### Eligibility requirements

Public health insurance is called the Medical Services Plan (MSP) and is available to eligible residents. To enroll, you must fall under one of the following categories:

<b>Resident</b>	Lives in British Columbia and is physically present in the province for at least 6 months of the calendar year.
<b>Dependent</b>	Dependents include spouses, children and dependent post-secondary students of eligible residents.
<b>First Nations Resident</b>	Enrollment and administration of MSP is done through the First Nations Health Authority.
<b>Temporary Resident</b>	Individuals who hold a study and/or work permit. Permits must be valid for a minimum of 6 months.

To obtain an MSP application form or to apply online, visit: [gov.bc.ca](http://gov.bc.ca)

## 2. BC DRIVER'S LICENCE

You have 90 days to switch over your licence once you move to B.C. and are able to drive with an existing, valid licence in the interim. For more information, visit [icbc.com](http://icbc.com).

## 3. SOCIAL INSURANCE NUMBER (SIN)

A SIN is required to work in Canada and/or to have access to government programs and benefits. For more information on application requirements, visit [canada.ca](http://canada.ca). You may also apply in person; the nearest location is in Terrace.

### Service Canada Centre

Address: 4630 Lazelle Avenue, Terrace  
Phone: 1-800-622-6232

## 4. VEHICLE REGISTRATION

Your vehicle must be registered with ICBC in order to obtain a B.C. licence plate and insurance. Register online at [icbc.com](http://icbc.com).

## 5. INSURANCE

Insurance companies are available in Kitimat.

### Westland Insurance

Address: 956 Wakashan Avenue  
Phone: 250-639-4739  
Web: [envisionfinancial.ca](http://envisionfinancial.ca)

### Kitimat Insurance Services

Address: 244 City Centre  
Phone: 250-632-4485  
Web: [insurebc.ca](http://insurebc.ca)

## 6. CHILD TAX BENEFIT

The Canada Child Benefit (CCB) is administered by the Canada Revenue Agency (CRA). This tax-free monthly payment is available to eligible families to help with the cost of raising children under 18 years of age. For more information, visit [canada.ca](http://canada.ca).

# ECONOMY & EMPLOYMENT

## Join the Boom EMPLOYMENT

With the construction of Canada's first LNG export facility, there are plenty of opportunities for businesses to thrive in Kitimat. It is anticipated that the community will experience a prolonged period of industrial development as numerous large scale industrial projects are lined up to take advantage of natural opportunities.

### **Kitimat is in a period of growth.**

This translates into opportunities:

- Start up a business
- Progress your career
- Find well-paying rewarding employment

Business services are presently in high demand to serve community residents, visitors and industrial workforces alike. This demand is expected to grow in the coming years, and with ongoing industrial investment from the LNG Canada and Cedar LNG projects, plus other residential and commercial developments, steady population growth is anticipated.

As businesses find opportunities in Kitimat, they also need to find employees. All of the economic activity in our community has created a strong demand for employees across sectors.

Finding the perfect job can be a journey. There are resources to assist with your job search in Kitimat:

### BC JOBS

BC Jobs is the largest job board in Western Canada.

### CANADA JOB BANK

Job Bank is Canada's national employment service, available as a website and mobile app.

### DISTRICT OF KITIMAT

The *kitimatbound.ca* website hosts information on local employers and employment services.

### KITIMAT VALLEY INSTITUTE (KVI)

Kitimat Valley Institute provides job placement services as well as efficient training opportunities that meet academic, industry and institutional training needs.

### SKILLED TRADES EMPLOYMENT PROGRAM (STEP)

The Skilled Trades Employment Program helps you get job-ready with construction resume writing tips, interview skill building, and advice from those in the skilled trades industry.

### WORKBC

WorkBC helps people find jobs, explore career options and improve their skills. It's the most comprehensive database of B.C. job postings

## ENTREPRENEURSHIP

Take advantage of natural opportunities in Kitimat. Kitimat is in a period of prolonged growth and there is a high demand for new businesses across sectors to serve the community.

### HOW TO OPEN AND OPERATE YOUR BUSINESS IN KITIMAT

The District of Kitimat also works confidentially with businesses and investors, including a free Starting a Business Guide for new entrepreneurs in the community.

For further assistance with your new business start-up, relocation, or site selection for industrial

or international trade, visit Kitimat's investment portal at [kitimat.ca](http://kitimat.ca) or contact the Economic Development Department at 250-632-8921 or email [edo@kitimat.ca](mailto:edo@kitimat.ca).

Other resources for starting a business include:

### CHAMBER OF COMMERCE

Promotes and protects business community interests to help make Kitimat a great place to work and live. Contact 250-632-6294 or email [info@kitimatchamber.ca](mailto:info@kitimatchamber.ca)

### COMMUNITY FUTURES 16/37

Provides information, support, and financial lending for business start-up, expansion or continuance.



# HOUSING

Kitimat offers a range of housing options to meet your family's needs. Whether you are looking to rent your first apartment, buy a new home or purchase your retirement acreage, you can find a place to call your own.

## Housing Taxes & Support

Updated semi-annually, the District of Kitimat has a Housing Fact Sheet which shows trends in new dwelling construction, real estate, and rental housing. Data has been tracked since the 1990's which helps you to see how industrial changes have impacted our housing market.

Visit [kitimat.ca](http://kitimat.ca) for a copy of the Housing Fact Sheet under *Housing*.

### PROPERTY TAXES

Property taxes are calculated through a joint provincial/municipal process. BC Assessment determines the value of your property and the

Kitimat Council determines the tax rate for the community. Your property value and tax rate are multiplied to determine taxes owing.

Key information about property taxes in Kitimat:

- Property tax notices are mailed out in May each year.
- Your property tax includes school and Regional District taxes. We collect these taxes on their behalf.
- Residential water and garbage fees are also included in your property tax. Seniors receive a 10% discount.
- Payment must be received by the District of Kitimat by 5:00 p.m. on the property tax due date or a 10% penalty is charged.
- Some residents may also be eligible for the BC Home Owner Grant.
- Kitimat's residential property taxes are the lowest in the region and home prices are the cheapest in the region as well.

Learn more about property taxes in Kitimat on our website [kitimat.ca](http://kitimat.ca) under Taxes.

## How To Find Housing

We have several real estate agents and community pages and groups to support you in finding your new home:

### REAL ESTATE AGENCIES

- Century 21 Northwest Realty Ltd
- Re/max Kitimat Realty
- Real Estate Websites
- Realtor.ca

# Neighborhoods

Kitimat is divided into five residential neighbourhoods. Whether you are looking to invest, purchase, build or rent – we have options at affordable prices.



## Cable Car

Rural subdivision, river boat launch, 4H fairgrounds, river fishing, playground

## Whitesail

Mount Elizabeth Middle Secondary School, Kitimat Valley Institute, Hirsch Creek Golf and Winter Club, Coho Flats and Smith Street hiking trails, playgrounds

## Nechako

Nechako Elementary School, St. Anthony's Catholic School, Kitimat City High, skateboard park, mountain bike trail, playgrounds, a neighbourhood shopping and service centre & our fire hall

City  
Centre

## Kildala

Kildala Elementary School, downtown core, Sam Lindsay Aquatic Centre, Riverlodge Recreation Centre, Kitimat Ice Rink, Tamitik Ice Arena, Kitimat General Hospital, Joe's trail, river fishing, playgrounds

## Strawberry Meadows

A rural lifestyle in the heart of the community, Oviatt Bike Park, Minette Bay West Park, 24/7 daycare facility

# TRANSPORTATION

Kitimat and Kitimaat Village are accessible by air, road and water. Transportation services are well established and provide options for getting from here to your destination.

## Transportation Options

### HANDYDART SERVICE

HandyDART service, a paratransit system provided through BC Transit, is available to those who are unable to safely navigate conventional public transit. A Medical Verification form may be required. Visit [bctransit.com](http://bctransit.com) for more information.

#### BC Transit - HandyDART

250-632-4449

Service Hours:

Monday to Sunday, 7:00 am - 7:30 pm |  
Holidays, Regular Service

### AIRPORT

#### Kitimat Airpark

The Kitimat Airpark is a registered airport in the Canadian Flight Supplement operated by the Kitimat Flying Club. The Airpark boasts a 3000 x 50 ft gravel surface runway.

#### Northwest Regional Airport (YXT)

Northwest Regional Airport Terrace-Kitimat is a modern, newly renovated and expanded airport offering several flights a day throughout the province.

### TAXI

#### Kitimat Taxi

250-632-2100

#### Kalum Kabs

250-632-9576

### BUS

Public transit buses are operated by BC Transit and run seven days a week on fixed routes throughout Kitimat with connections to regional services.

### MARINAS

**MK Bay Marina** is a full service marina located 10 minutes from Kitimat on the Haisla First Nation territory. MK Bay Marina offers short and long-term moorage, boat launching, truck and trailer parking, full service camping, retail shopping, a coffee shop, and seafood processing. For more information visit [mkbaymarina.ca](http://mkbaymarina.ca).

**Hospital Beach Boat Launch** is a free boat launch located just past Rio Tinto on the west side of the channel. This free-launch is provided to the community by Rio Tinto and is on Rio Tinto's property.

**Minette Bay Marina** is a private marina located 5 minutes from Kitimat towards Kitimaat Village. For more information visit [kitimat-chamber.ca](http://kitimat-chamber.ca).

# ENTERTAINMENT & RECREATION

We may be known for having some of the best fishing on the west coast – but that’s certainly not all there is to do in Kitimat.

## ARTS & CULTURE

Kitimat maintains a vibrant and diverse arts and culture scene with public art, exhibitions, concerts, theatre, a pottery studio, and many more cultural programs and experiences. Imaginative residents, modern infrastructure and a strong regional presence of the Haisla First Nation together provide an ideal environment for artistic and cultural endeavors.

### THEATRE

#### Mount Elizabeth Theatre

Address: 1491 Kingfisher Avenue  
Phone: 250-632-7887  
Mobile: 250-639-6775  
Email: metconcerts@gmail.com  
Web: metconcerts.com  
Facebook: @mountelizabeththeatre

### TOURS

#### Rio Tinto Smelter Tours

Address: 1 Smeltersite Road  
Phone: 250-639-8383  
Web: riotinto.com

### ART GALLERIES

#### Blackfish Gallery

Address: 650 Raven Crescent  
Phone: 250-632-6469

### MUSEUMS

#### Kitimat Museum & Archives

Address: 293 City Centre  
Phone: 250-632-8950  
Email: info@kitimatmuseum.ca  
Web: kitimatmuseum.ca  
Instagram: @kitimatmuseum  
Facebook: @kitimatmuseum

### MARKETS

#### Friday Night Market

Email: info@kitimatmarket.ca  
Phone: 250-632-6294

### PUBLIC LIBRARY

#### Kitimat Public Library

Address: 940 Wakashan Avenue  
Phone: 250-632-8985  
Email: ask@kitimatlibrary.ca  
Web: kitimatlibrary.ca  
Instagram: @kitimatpubliclibrary  
Facebook: Kitimat Public Library Association

# OUTDOOR ACTIVITIES

Our location at the head of the Douglas Channel and next to the Kitimat River makes us a sport fisher's paradise with access to salt and freshwater fishing within minutes of downtown. Whether you are fishing the mouth of the Kitimat River, floating in a drift boat, or choose to walk to one of the hot spots on the river bank, the excitement of pulling in the big one always looms.

Hike along the shores of the Douglas Channel, the banks of the Kitimat River, or climb the trail to the crystal clear mountain lakes of Robinson Ridge. Kitimat is situated on the edge of the Great Bear Rainforest and there is plenty of opportunity to observe wildlife in their natural environment. Remember to take your camera!

## Parks, Campgrounds & Sports Fields

The Kitimat region is home to coastal parks, protected areas, and heritage conservancies accessible by land. Others are more remote and accessible only by water.

Kitimat boasts park spaces suitable for all members of the family, including:

- Outdoor wading pools and green space throughout the community
- 4 Heritage Walkway Circle Tours to experience the history of this planned community
- Over 45 km of paths that wind through the community
- Skateboard and bike park

- Many playgrounds throughout town
- Haisla Hill Trial

## PARKS

### ADVENTURE PARKS

There are 22 adventure parks.

### CENTENNIAL PARK

Built in 1971 to commemorate the 100th anniversary of British Columbia's entry into Confederation.

### COGHLIN PARK

Haisla Boulevard scenic lookout with spectacular views of the Douglas Channel from the manicured gardens of Coghlin Parks.

### GIANT SPRUCE PARK

Located on the shores of the Kitimat River floodplain, the remains of a previously registered "largest living Sitka Spruce in B.C." can be found in the park.

### HERITAGE PARK

Tribute to many of the different multicultural groups who reside in Kitimat. Located in front of the Chamber of Commerce and Visitor Information Centre.

### KULDO DOG PARK

The Kuldo Dog Park is located on Kuldo Boulevard across from Driftwood Street. Please read the Dog Park rules prior to visiting.

### KITIMAT SK8 PARK

An outdoor park for those on skateboards, bikes, scooters and rollerblades.

### OVIATT BIKE PARK

A newly developed bike park in the Strawberry Meadows area.

Visit the BC Parks website for a comprehensive list of parks in the Kitimat area.

## SPORTS FIELDS

Kitimat has five **soccer fields**

- One soccer field located at Riverlodge Recreation Centre
- Four fields at the Bill Rich Soccer Fields

Kitimat has six **baseball diamonds**

- Three at Riverlodge Recreation Centre
- Three at Nechako School

Kitimat has seven **tennis courts**

- Three at Riverlodge Recreation Centre
- Two at Nechako Centre
- Two at Mount Elizabeth Middle Secondary School

To book, call the **Riverlodge Recreation Centre** at 250-632-8970

## CAMPGROUNDS

### HIRSCH CREEK PARK CAMPGROUND

Phone: 250-632-8955

Season: May 15 to September 15  
(weather dependent)

### RADLEY PARK CAMPGROUND

Phone: 250-632-8955

Season: May 15 to September 15  
(weather dependent)

For more information and to reserve a campsite, visit [reserve.campgroundbooking.com](https://reserve.campgroundbooking.com)



# Fishing

Located at the head of the Douglas Channel and beside the Kitimat River, we are a sport fisher's paradise. With some of the best fly-fishing waters, surrounded by pristine wilderness just minutes from downtown, fishing before or after work is even possible. For those craving more adventure, remote fly-in spots offer spectacular scenery and tranquility.

## FRESHWATER

Kitimat River has plenty of fish stocks 12 months of the year offering some of the finest steelhead, salmon, and trout fishing in British Columbia!

## SALTWATER

Some of the largest halibut on the B.C. coast are found in the protected waters of the Inside Passage. Dungeness crab, snapper, and prawns can be found as well!

## HATCHERY

The Kitimat River Fish Hatchery works to enhance our coho, chinook, chum, steelhead, and cutthroat populations.

Phone: 250-639-9888

Web: pac.dfo-mpo.gc.ca

## Charters, Guides & Eco Tours

### Blue Heron Charters

Phone: 250-639-9359 or 250-639-5101

Email: rjeckstein@outlook.com

Web: blueheroncharters.com

Facebook: Blue Heron Charters

### DC Fish Charters

Phone: 705-380-1115

Email: info@dcfishcharters.com

Web: dcfishcharters.com

Facebook: DC Charters

Instagram: @DC\_fishingcharters

### Kitimat Adventures

Phone: 250-639-4277

Email: tjhittel@telus.net

Web: kitimatlodge.com

Facebook & Instagram: @KitimatLodge

### Kingfish Westcoast Adventures Ltd.

Phone: 250-639-6431

Toll-free: 1-877-781-4555

Email: info@fishinginkitimat.com

Web: fishinginkitimat.com

### Nautical West Sport Fishing

Phone: 250-632-4547

Email: reservations@nauticalwest.com

Web: nauticalwest.com

Facebook: Nautical West Sports Fishing

Instagram: @NauticalWestSportsFishing

### North Pacific Transport & Eco-Tours

Phone: 250-639-1000

Email: marcyoung@citywest.ca

### Reliable Guide and Charters Ltd.

Phone: 250-632-1275

Email: wakita@telus.net

Web: reliableguideandcharters.com

### Slabs Fishing Co

Phone: 250 639 2578 or 250 639 5421

Email: slabsinfo99@gmail.com

Instagram & Facebook: @Slabsfishingco

### Northwest BC Jetboat Tours

Phone: (250) 617-5931

Email: info@northernbcjetboattours.ca

Web: northernbcjetboattours.ca

# Walking & Hiking

Hike along the shores of the Douglas Channel, the banks of the Kitimat River or climb the trail to the crystal clear mountain lakes of Robinson Ridge.

**TRAILS** There are hundreds of kilometers of trails to explore in and around Kitimat. Some of the more popular trails include:

Trail Name	Difficulty	Distance	Type	Highlight
<b>Clague Mountain Trail</b>	Hard	8km	One-way	Trail to Clague Mountain with overnight cabins
<b>Coho Flats</b>	Easy	2km	One-way	Trail to the Kitimat River
<b>Fisherman's Trail</b>	Intermediate	3.5km	One-way	Crosses rugged rock terrain with short up and down pitches.
<b>Hirsch Creek Canyon Trail</b>	Easy	400m-4km	One-way	Short 400m walk to the canyon viewpoint or a longer route through forest
<b>Hirsch Creek Park Trail</b>	Easy	1.5km	Loop	Excellent picnic spot and to view a coastal old-growth forest and large trees.
<b>Joe's Trail</b>	Easy	3.5km	One-way	Runs down the east bank of the Kitimat River to the end of the Lower Dyke Road.
<b>Mount Elizabeth Trail</b>	Hard	10.9km	One-way	Follows along a ridge and then drops into a saddle before final summit climb.
<b>North Cove Trail</b>	Intermediate	3.2km	One-way	Descends through old cut blocks and old-growth forests.
<b>North Hirsch Creek Trail</b>	Easy	1.5km	One-way	Follows the old road/ATV trail up the north side of the creek and to the logging bridge.
<b>Pine Creek Trail</b>	Intermediate	1-2km	Loop	Upper and lower loops are 1km
<b>South Hirsch Creek Trail</b>	Easy	2km	One-way	Trail that follows the south side of Hirsch Creek

## SITES WITH SIGHTS

### MOORE CREEK FALLS

Located across from Rio Tinto's BC Works main office building, Moore Creek Falls is a photographer's delight. Climb the staircase carved into the hillside, and the rushing sound of snowmelt water will lead you to the falls.

### HOSPITAL BEACH

Hospital Beach (the original site of Kitimat's first hospital) is located just past Rio Tinto's BC Works smelter. It is a popular picnic grounds and gathering spot for visitors and locals during the summer months with views of the Douglas Channel. At low tide, you can explore the shore for seashells and other small sea creatures.



## Mountain Biking

### OVIATT BIKE PARK

Address: 106 Blackberry Street  
Facebook: Oviatt Bike Park

### MECA BIKE TRAIL

Facebook: Mount Elizabeth Cycling Association

## Kayaking

Kayakers who venture out into the Douglas Channel are rewarded with stunning scenery, some wonderful beaches, incredible rock formations, and the chance to see wildlife, including whales, on occasion. Rent a kayak from our Visitor Centre.

## Golf

Kitimat is home to a picturesque 18 hole golf course meandering through the forest, and a clubhouse where you can finish off the day with a frosty pint on the outdoor patio.

### HIRSCH CREEK GOLF & WINTER CLUB

Address: 2000 Kingfisher Ave  
Phone: Pro Shop 250-632-4653 |  
Lounge 250-632-4242  
Web: hirschcreekclub.ca

## Winter Activities

Imagine a morning of cross country skiing with the sunrise following you down trails, and an afternoon of sledding to cabins on snow covered mountains. From Kitimat you also have easy access to downhill and backcountry skiing options.

## SKIING & SNOWBOARDING

Downhill and backcountry skiing, along with snowboarding and nordic skiing, are loved in the area, and we have access to two world class ski hills near Kitimat.

### SHAMES MOUNTAIN

Address: 4805 BC-16, Terrace, BC  
Phone: 250 635 3773  
Email: shamesmountain@citywest.ca  
Web: mymountaincoop.ca/shames-mountain  
Facebook: Shames Mountain  
Instagram: @shamesmountain

### HUDSON BAY MOUNTAIN RESORT

Address: 1181 Main Street  
PO Box 492 Smithers, BC  
Phone: 250-847-2058  
Toll-free: 1-866-575-4669  
Email: info@hudsonbaymountain.com  
Web: hudsonbaymountain.ca  
Facebook & Instagram: @hudsonbaymountain  
Twitter: @HudsonBayMtn  
YouTube: Hudson Bay Mountain

### SNOW VALLEY NORDIC SKI CLUB

Facebook: Onion Lake Ski Trails  
(Snow Valley Nordic Ski Club)  
Email: snowvalleynordic@gmail.com  
Web: snowvalleynordics.com

## SNOWMOBILING

### KITIMAT SNOWMOBILE CLUB

Email: kitsnowhike@gmail.com

Facebook: Kitimat Snowmobile and Hikers Club

## SNOWSHOEING

Snowshoe on Clague Mountain Trail and stay overnight at the backcountry cabin with epic views of Kitimat Valley. There are routes for everyone, from novice to more experienced.

## CURLING

The Hirsch Creek Golf and Winter Club has four curling sheets and hosts a variety of league nights, open times, and bonspiels for the public to attend.

For more info, visit [hirschcreekclub.com/curling](http://hirschcreekclub.com/curling) or contact the club at 250-632-4242 or 250 632 4653.



# INDOOR ACTIVITIES

## AQUATIC CENTRE

### SAM LINDSAY AQUATIC CENTRE

The District of Kitimat owns and operates Sam Lindsay Aquatic Centre – a community swimming and leisure pool complex attached to Tamitik Arena and one of the best pools in Northwest BC.

#### Features:

- 25 m six lane pool
- Shallow tank
- Sauna (extra spacious)
- Hot tub
- Family change rooms
- Water park toys
- Lazy river
- Water slide
- Kiddies pool
- Leisure pool
- Two squash courts
- Racquetball court
- Strength training room

**Address:** 396 City Centre

**Phone:** 250-632-8955

**Email:** [recreation@kitimat.ca](mailto:recreation@kitimat.ca)

## RECREATION CENTRE

### RIVERLODGE RECREATION CENTRE

Riverlodge is Kitimat's centre for recreation programs, including fitness and sports classes, youth and preschool programs, workshops and special events.

#### Features:

- Activity Room: 99-person capacity
- High-speed wireless internet
- Community Room: 350-person capacity
- Gymnasium: 690-person capacity
- Kitchen facilities
- Kitimat Senior Centre
- Kitimat Youth Centre
- Pre-kindergarten room
- Pottery studio
- Rock wall
- Saunas: male and female
- Softball fields
- Soccer field
- Tennis courts
- Weight room
- Cardio training room
- Equipment rentals

**Address:** 654 Columbia Avenue    **Phone:** 250-632-8970

## ICE ARENAS

Kitimat boasts two ice rinks that collectively extend the ice season to nine months. Available for user groups or ad-hoc renters generally from the middle of August until mid to late April. Several arena programs are available between the two facilities.

### TAMITIK ICE ARENA

#### Features:

- First aid room
- Five dressing rooms (four with showers)
- Heated seating areas
- Meeting rooms
- Press box
- Referee room (with shower)
- Skate sharpening service
- Two concessions
- Two sets of public washrooms
- Dry floor available for summer season
- Handicapped accessible with viewing area
- Seating capacity for 1977 with standing room for 400 more
- Walking track, 169 metres

**Address:** 396 City Centre  
**Phone:** 250-632-8955

### KITIMAT ICE RINK (KIR)

#### Features:

- Four dressing rooms (three with showers)
- Female dressing room with shower
- Heated seating area
- Public washrooms
- Referee room with shower
- Warm room
- Building and viewing area accessible to those with disabilities
- Seating capacity is 600 with standing room for 200 more

**Address:** 400 City Centre  
**Phone:** 250-632-8955

## GYMS & STUDIOS

### GYMS

#### Onyx Peak Performance Ltd.

193 Nechako Centre—24hr access

Phone: 250-632-7737

Email: kitimatfitnessgym@gmail.com

Facebook: Kitimat Fitness Gym

Instagram: @kitimatfitnessgym

#### Pace Yourself Wellness Centre

Address: 334 City Centre

Phone: 250-632-5239

Web: paceyourselfwellness.ca

Facebook: Paceyoursel Wellness Center

### STUDIOS

#### Dance Kitimat Studio

Email: dancekitimat@hotmail.com

Facebook: Dance Kitimat Studio Inc.

Instagram: @dance\_kitimat\_studio

#### Koi Yoga Studio

Phone: 250-279-9090

Instagram: @koi\_yogastudio

#### Vida Studio

Address: 5-528 Mountainview Square

Web: vidastudiokitimat.com

Facebook: Vida Studio Kitimat

Instagram: @vidastudiokitimat



## Eat & Drink RESTAURANTS & PUBS

#### Blueroom Tavern

650 Kuldo Boulevard

Phone: 778-631-2824

#### Chalet Restaurant

852 Tsimshian Boulevard

Phone: 250-632-2662

#### Chilly & Dancer Pub

874 Tsimshian Boulevard

Phone: 250-632-6920

#### Chop Suey Kitchen

426 Enterprise Avenue

Phone: 250-632-6666

#### Dolly's Fish Market

246 City Centre

Phone: 778-973-1100

#### Fortune Kitchen

410 Enterprise Avenue

Phone: 250-632-3828

#### Mr. Mikes Steakhouse Casual

525 Mountainview Square

Phone: 778-631-2391

#### Nana's Little Town Play Cafe

369 City Centre

Phone: 778-631-2677

#### The Office Bistro

406 Enterprise Ave

Phone: 250-639-2038

#### Pedro's Grill

342 City Centre

Phone: 250-632-2199

#### Pizzarama Pizzeria

171 Nechako Centre

Phone: 250-639-9241

#### Rosario's Restaurant

607 Legion Road

Phone: 250-632-4980

rosarios.ca

#### Sushi J

248 City Centre

Phone: 250-639-1134

#### Two Peaks Brewing

578 Mountainview Square

twopeaksbrewery.ca

#### The Creek Bar & Grill

2000 Kingfisher Avenue

Phone: 250-632-4242

#### Wee Geordies Pub

178 Nechako Centre

Phone: 250-632-4277

Delicious

# Shopping & Services

Kitimat has a variety of shopping and modern service options to meet your daily needs. Kitimat has key commercial centres including City Centre, Mountainview Square, and Nechako Centre.

Kitimat has a large selection of unique and independent businesses many of which are featured on the Kitimat Bound website [kitimatbound.ca](http://kitimatbound.ca)

## CITY CENTRE

City Centre, including the City Centre Mall, is one of Kitimat's popular meeting, shopping and public spaces. Kitimat's city centre provides services from independent retail outlets, banks, restaurants, professional and municipal office spaces.

## MOUNTAINVIEW SQUARE

Mountainview Square is located right next to Kitimat's city centre and offers a variety of business services such as professional services, food and beverage, and retail.

## NECHAKO CENTRE

Nechako Centre is a business centre located in the heart of the Nechako neighbourhood. Nechako Centre offers a variety of services including professional services, food and beverage, and retail.

## GROCERY STORES

### Kildala Grocery Ltd.

Address: 19 Babine Street  
Phone : 250-632-2442

### Kyle's NoFrills

Address: 194 City Centre  
Phone: 250-632-2576

### Save-On-Foods

Address: 535 Mountainview Square  
Phone: 250-632-2255

### Tony's Specialties

Address: 101 Nechako Centre  
Phone: 250-639-9569

## BANKING

### CIBC

Address: 291 City Centre  
Phone: 250-632-8610

### Envision Financial

Address: 954 Wakashan Avenue  
Phone: 250-639-4700

### RBC Financial Group

Address: 378 City Centre  
Phone: 250-639-9281

### Scotiabank

Address: 201 City Centre  
Phone: 250-632-8420

## SALON/SPAS

### Black Velvet Hair and Beauty Studios

Address: 54 Greyling Ave  
Phone: 250-639-6721  
FB: Black Velvet Hair and Beauty Studio

### Hair Essentials

Address: 105 Nechako Centre  
Phone: 250-632-5644  
Facebook: Hair Essentials Kitimat

**Nechako Barber Shop**

Address: 105 Nechako Centre

Phone: 250-632-6160

**Phoenix Rising Healing**

Address: 237 City Centre

Phone: 778-631-2393

**Snipz Salon**

Address: Suite 211-276 City Centre

Phone: 778-818-0319

**Lace Beauty Lounge**

Address: 528 Mountainview Square

Phone: 250-632-4373

**Tech Hair Design**

Address: 101-370 City Centre

Phone: 250-639-0087

**Vida Aesthetics Clinic**

Address: 5-528 Mountainview Square

Phone Number: 250 279 3030,

Facebook: Vida Aesthetics Clinic

**Vitality Spa & Clinic**

Address: 360 City Centre

Phone: 250-632-2289

Web: [vitalitykitimat.ca](http://vitalitykitimat.ca)

# Community Groups & Clubs

Many of our residents contribute their time and energy to provide a variety of programs and services that help make Kitimat a great place to live. There are clubs and groups related to arts and culture, sports, and community services, from youth to senior.

A full list of clubs and groups is available at [kitimat.ca](http://kitimat.ca) under Recreation and Leisure, Clubs and Community Groups.

# Important Information

## LEISURE GUIDE

The District of Kitimat offers a seasonal Leisure Guide in December, April, and August. You can find the guide at [kitimat.ca](http://kitimat.ca) under Recreation and Leisure → Leisure Guide.

## BE BEAR AWARE

B.C. is bear country. Expect to see bears around Kitimat, sometimes moving through the community. Don't feed the bears!

If you see a bear in a residential area:

- Stay calm. Usually the bear is just passing through the area and if no food is available, it will move on.
- Keep away from the bear and warn others to keep away. Bring children and pets indoors.
- To report a conflict with wildlife that threatens public safety, call the conservation officer immediately so that proactive education and conservation efforts can be used.

## Preventing Problems with Bears

Local provincial conservation officers estimate that half the calls they receive about nuisance bears are garbage related. Please take responsibility for your bear attractants.

## Conservation Officer

Phone: 877-952-7277

More *Bear Aware* info available at [wildsafebc.com](http://wildsafebc.com)

## FIREWORKS

Fireworks are permitted in Kitimat during select times. Please familiarize yourself with fireworks safety rules.

## Purchase dates

Dec. 24–31 | Jun. 22–Jul. 1 | Oct. 24 – Oct. 31

## Discharge dates

Dec. 31 | Jul. 1 | Oct. 31

# EDUCATION & CHILDCARE

Education available in Kitimat ranges from childcare to post-secondary education.

## Schools

There are both public and independent school options in Kitimat from kindergarten to grade 12.

### Elementary Schools

#### KILDALA ELEMENTARY

*Public school. K-6. Offers French immersion.*

Address: 803 Columbia Avenue

Phone: 250-632-6194

Web: kildala.cmsd.bc.ca

#### NECHAKO ELEMENTARY

*Public school. K-6.*

Address: 61 Nightingale Street

Phone: 250-632-2912

Web: nechako.cmsd.bc.ca

### Middle & Secondary Schools

#### KITIMAT CITY HIGH

*Alternate school. 9-12.*

Address: 1426 Cormorant Avenue

Phone: 250-632-2811

Web: kitimatcityhigh.cmsd.bc.ca

#### MOUNT ELIZABETH MIDDLE & SECONDARY SCHOOL

*Public school. 7-12.*

Address: 1491 Kingfisher Avenue

Phone: 250-632-6174

Web: mountelizabeth.cmsd.bc.ca

#### ST. ANTHONY'S CATHOLIC SCHOOL

*Private school. K-9.*

Address: 1750 Nalabila Boulevard

Phone: 250-632-6313

Web: stanthonyschoolkitimat.com

## Childcare

Kitimat has an excellent array of childcare facilities with bilingual options. We will also soon be the first community in British Columbia to offer 24-hour childcare to support families employed in shift work.

For a comprehensive list of all childcare facilities in Kitimat, please visit Northern Health's website; on the left side under Community Care Licensing click on Community Care Facilities and then choose Kitimat.

# Post Secondary

## COAST MOUNTAIN COLLEGE

Accredited post-secondary institution with small class sizes offering health and human services programs; online programs; university credit programs, trades foundation and apprenticeship programs.

Innovative and flexible mobile training available. The closest campus to Kitimat is located in Terrace.

5331 McConnell Ave - Terrace, BC, V8G 4X2  
 Phone: 250-635-6511  
 Toll-free: 1-877-277-2288  
 Email: [info@coastmountaincollege.ca](mailto:info@coastmountaincollege.ca)  
 Web: [coastmountaincollege.ca](http://coastmountaincollege.ca)  
 Facebook & Instagram: [@coastmountaincollege](https://www.facebook.com/coastmountaincollege)  
 Twitter: [@cmtncollege](https://twitter.com/cmtncollege)  
 YouTube: Coast Mountain College

## UNIVERSITY OF NORTHERN BRITISH COLUMBIA

The University of Northern British Columbia offers outstanding undergraduate and graduate learning opportunities and has a campus in Terrace, only a 45 minute drive from Kitimat.

4837 Keith Avenue - Terrace, BC, V8G 1K7  
 Phone: 250-615-5578  
 Toll-free: 1-800-697-7388  
 Email: [northwest@unbc.ca](mailto:northwest@unbc.ca)  
 Web: [unbc.ca](http://unbc.ca)

## KITIMAT VALLEY INSTITUTE

Kitimat Valley Institute is a professional development center that provides job placement services as well as efficient training opportunities that meet academic, industry and institutional training needs.

Address: 1352 Alexander Avenue  
 Phone: 250-639-9199  
 Email: [admin@kves.ca](mailto:admin@kves.ca)  
 Web: [kves.ca](http://kves.ca)



# HEALTH & WELLNESS SERVICES

Kitimat has a range of accessible health and wellness services to serve all its residents.

## Hospital & Clinics

### Kitimat General Hospital

The Kitimat General Hospital and Health Centre (KGH) is a modern, Level 4 trauma centre providing emergency care and medical services to the community of Kitimat. KGH is managed through Northern Health. Features include:

- 24/7 emergency department
- 22 acute care beds; 2 for maternity
- 36 complex and residential care beds
- Bone density scanning
- Lab
- Occupational therapy
- Observation/seclusion room
- Recovery room
- Recreational therapist
- Rehabilitation-physiotherapy
- Operating rooms
- Ultrasound
- Visiting digital mammography service
- X-ray

920 Lahakas Blvd South  
Phone: 250-632-2121  
Web: [northernhealth.ca](http://northernhealth.ca)

### Clinics

#### PHYSICIANS

**City Centre Medical Clinic**  
**Drs. Feenan & Mills**

Address: 284 City Centre  
Phone: 250-632-6131

**Dr. Huang**

Address: 570 Mountainview Square  
Phone: 250-632-2118

**Drs. Kay & Van Schalkwyk**

Address: 970 Lahakas Boulevard  
Phone: 250-632-8679

**Mountainview Medical Clinic**

**Drs. van der Westhuyzen, Wahl & van Rensburg**

Address: 568 Mountainview Square  
Phone: 250-632-3135

Anyone who is seeking a family doctor should sign up for the Health Connect Registry:  
[healthlinkbc.ca/find-care/health-connect-registry](http://healthlinkbc.ca/find-care/health-connect-registry)

For a comprehensive list of physicians in Kitimat, please check the College of Physicians and Surgeons of British Columbia's website.

#### OPTOMETRISTS

**Fusion Eye Care**

Address: 558 Mountainview Square  
Phone: 250-632-2821  
Web: [fusioneyedoctors.com](http://fusioneyedoctors.com)



## VETERINARIANS

### **Kitimat Veterinary Hospital**

Address: 587 Mountainview Square

Phone: 250-639-2299

Web: [kitimatvethospital.ca](http://kitimatvethospital.ca)

## DENTISTS

### **Drs. Gottschling & Stevenson**

Address: 201-180 Nechako Centre

Phone: 250-632-4641

Web: [yourgreatsmiles.ca](http://yourgreatsmiles.ca)

### **Dr. Feldhoff**

Address: 302-180 Nechako Centre

Phone: 250-639-9303

### **Dr. Rinquinha**

Address: 301-180 Nechako Centre

Phone: 250-632-4631

## PHYSIOTHERAPISTS, MASSAGE, CHIROPRACTORS & OTHERS

### **Kitimat General Hospital**

Address: 920 Lahakas Boulevard

Phone: 250-632-3181

### **Pace Yourself Wellness Centre**

Address: 334 City Centre

Phone: 250-632-5239

Web: [paceyourselfwellness.ca](http://paceyourselfwellness.ca)

### **Knight Chiropractic Inc.**

Address: 101-180 Nechako Centre

Phone: 250-632-4773

### **Vitality Spa & Clinic**

Address: 360 City Centre

Phone: 250-632-2289

Web: [vitalitykitimat.ca](http://vitalitykitimat.ca)

# Mental Health Support Services

There are local programs, services and resources in Kitimat, along with those available through Northern Health and the First Nations Health Authority.

## BC 211

BC 211 helps you find information on services for:

- Addiction
- Abuse
- Counselling
- Employment Assistance
- Financial Assistance
- Housing
- Language Classes
- Legal Assistance

Web: [bc211.ca](http://bc211.ca)

## COUNSELLING SUPPORT OPTIONS

### Adult Mental Health & Addictions

Address: 920 South Lahakas Blvd  
Phone: 250-632-3181

### Alcohol & Drug Information & Referral Services (BC-Wide)

Phone: 1-800-663-1441

### Horizon House Club of Mental Health

Operated by Northern Health.  
Phone: 250-632-7584

### Kitimat Victim Services

Address: 888 South Lahakas Blvd  
Phone: 250-639-2122

### Kitimat Child & Youth Mental Health Intake Clinic (CYMH)

795 South Lahakas Blvd  
Phone: 250-632-7256

### Kitimat Community Development Centre Society

1515 Kingfisher Ave  
Phone: 250-632-3144

### Mental Health Family Resource Centre

Operated by British Columbia Schizophrenia Society (BCSS).  
Phone: 1-888-888-0029

### Tamitik Status of Women

606 Mountainview Square  
Phone: 250-632-8787  
Email: [info@tamitik.ca](mailto:info@tamitik.ca)  
Web: [tamitik.ca](http://tamitik.ca)

## CRISIS SUPPORT

### First Nations Health Authority

Phone: 1-855-550-5454  
Web: [fnha.ca](http://fnha.ca)

### Gya'wa'tlaab Healing Centre Society

Tel: 250-639-9817 Fax: 250-639-9815  
Email: [intake@gyawatlaab.ca](mailto:intake@gyawatlaab.ca)

### Kids Help Phone

Phone: 1-800-668-6868  
Web: [kidshelpphone.ca](http://kidshelpphone.ca)  
(Text, Messenger, and Live Chat are available)

### Kitimat Food Share Program

Address: 202-276 City Centre  
Phone: 250-279-4357

### Tamitik Status of Women - Free Store

Address: 350-370 City Centre  
Phone: 250-632-8787

### Kuu-us Crisis Line Society

For Indigenous people throughout BC  
Phone: 1-800-588-8717

### Northern BC Crisis Line

Phone: 1-888-562-1214  
Web: [crisis-centre.ca](http://crisis-centre.ca)

### WAVAW Crisis Line

For Survivors of Sexual Assault  
Phone: 1-877-392-7583  
Web: [wavaw.ca](http://wavaw.ca)

# Senior Homes & Assisted Living

Kitimat is committed to supporting its seniors and has a variety of services including educational and recreational activities, programs, special events, and programs to help seniors remain independent.

## **Kitimat 50+ Society Centre**

Address: 658 Columbia Avenue  
Phone: 250-632-3405 or 250-632-3475  
Web: [kitimat50society.com](http://kitimat50society.com)

## **Delta King Place**

Address: 701 Mountainview Sq  
Phone: 250-632-6535  
Web: [deltakingplace.ca](http://deltakingplace.ca)

## **Kitimat Community Development Centre Society**

Address: 1515 Kingfisher Avenue  
Phone: 250-632-3144 ext. 216  
Web: [kitimatcdc.ca](http://kitimatcdc.ca)

## **Mountainview Lodge**

Address: 920 Lahakas Blvd S  
Phone: 250-632-8357

# Pharmacies

## **Rainforest Wellness Pharmacy**

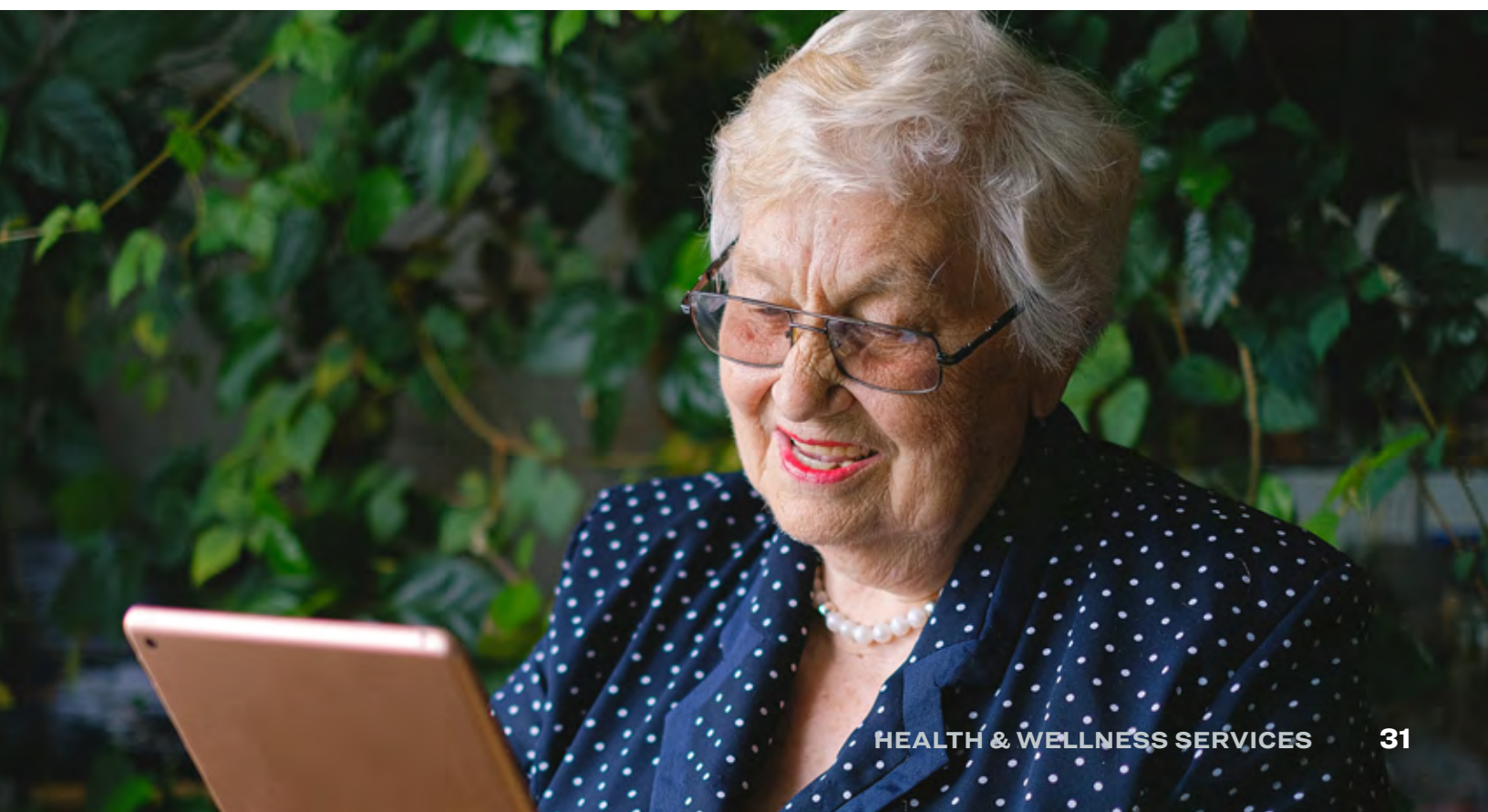
Address: 327 City Centre  
Phone: 250-632-2914

## **Save-On-Foods Pharmacy**

Address: 535 Mountainview Sq  
Phone: 250-632-2255

## **Shoppers Drug Mart**

Address: 120 City Centre  
Phone: 250-632-6177





# PUBLIC SERVICES

## Emergency Services

### EMERGENCY NUMBERS

**For all emergencies:** dial **911** for assistance from police, fire or ambulance.

Be prepared to provide the following information:

- Address of incident
- Phone number
- Detailed information

**Crime Stoppers/Tips**  
1-800-222-8477

**Crisis Line (Northern BC)**  
1-888-562-1214

**1-800-SUICIDE (BC-Wide)**  
1-800-784-2433

**Dunmore Place Transition House (Women's Shelter)**  
250-632-6070

**Ministry of Children & Family Development Children Help Line**  
1-800-663-9122

**Poison Control Centre**  
1-800-567-8911

**Victim Link (multi-lingual)**  
1-800-563-0808

Sign up for the District's Voyent Alert for local emergency updates: [kitimat.ca/en/city-services/EmergencyNotificationSystem.aspx](https://www.kitimat.ca/en/city-services/EmergencyNotificationSystem.aspx)

## FIRE & AMBULANCE

Phone: 250-632-8940 (Non-emergency calls)

## SEARCH & RESCUE

### **Kitimat Land Search & Rescue**

Phone: 250-632-8945

Facebook: Kitimat Search and Rescue

### **Kitimat Marine Search & Rescue**

Phone: 250 639 5158

Email: rcmsar63kitimat@gmail.com

## COMMUNITY EMERGENCY NOTIFICATION SYSTEM

The District of Kitimat uses Voyent Alert which is a multi-purpose communications service. The primary purpose is to provide emergency communications information but users can now also register to receive non-emergency notifications from the District of Kitimat. For more information or to register visit [kitimat.ca](http://kitimat.ca)

# Social Supports

## HOUSING SUBSIDIES & FUNDS

The District of Kitimat has a comprehensive list of affordable housing funds and subsidies for Kitimat residents. Learn more at [kitimat.ca](http://kitimat.ca).

## TEMPORARY HOUSING OPTIONS

Kitimat's shelter is operated by the Kitimat Community Development Centre Society.

### **Cold Weather Shelter (Douglas Place)**

Address: 480 City Centre

Phone: 250-632-3144

## COMMUNITY GARDEN

### **Kitimat Community Garden**

Address: 1332 Lahakas Boulevard North

Phone: 250-632-9107

## FOOD BANK

### **Kitimat Food Bank**

Address: 230 City Centre

Phone: 250-632-6611

# Other Public Services



## ANIMAL CONTROL

Animal control services in Kitimat are under contract to the Kitimat Community Humane Society (KCHS). KCHS responds to and provides shelter to animals in distress.

### **Kitimat Community Humane Society**

Address: 1000 Eurocan Way

Phone: 250-632-7373

## SNOW REMOVAL

The District of Kitimat's Public Works Department is responsible for keeping main roads clear of snow and clears residential streets on a daily basis. Pedestrian walkways and sidewalks are also cleared frequently. Winter rainfall helps keep roads bare and reduces snowfall accumulation on the ground.

# Garbage & Recycling

## CURBSIDE COLLECTION

The District of Kitimat provides curbside garbage, yard waste, and recycling collection in the community. For more information look under Our Community/Garbage and Recycling at [kitimat.ca](http://kitimat.ca)



## DISPOSAL

### Landfill

Kitimat has a landfill that is pay-as-you-use for non-commercial, residential waste. For more information and for landfill hours visit [kitimat.ca/en/our-community/landfill.aspx](http://kitimat.ca/en/our-community/landfill.aspx)

### Disposal Segregation

Refuse must be segregated and deposited in specific locations as shown by the directional signs at the site. *Not accepted at the site:*

- Clean cardboard
- Anti-freeze solvents
- Paint
- Friable asbestos
- Used motor oil

## MOTOR OIL DISPOSAL

### Kal Tire

Address: 236 Enterprise Avenue  
Phone: 250-632-2151

### Snow Valley Ford Sales

Address: 405 Enterprise Avenue  
Phone: 250-632-6181

For more information, contact the recycling hotline at 1-800-667-4321.

## RECYCLING CENTRES

### Kitimat Understanding The Environment (KUTE) (Public recycling centre)

KUTE accepts the following materials:

- Paper and cardboard
- Styrofoam
- Electronics
- Small appliances and power tools
- Paint
- Light bulbs and fixtures
- Batteries and cell phones
- Smoke and CO2 alarms

Address: 314 Railway Avenue  
Phone: 250-632-6633

### Kitimat Bottle Depot (public recycling centre)

Kitimat Bottle Depot is the community's primary location to recycle beverage containers and many other products. For more information on hours and accepted materials visit [return-it.ca](http://return-it.ca).  
Address: 428 Enterprise Avenue  
Phone: 250-632-3377

# PLACES OF WORSHIP

Kitimat has several places of worship and faith based communities available. For more information visit *Places of Worship* at [kitimat.ca](http://kitimat.ca)

## CHURCHES

### Christ Church Anglican

Address: 1739 Gyrfalcon Avenue  
Phone: 250-632-7812

### Christ the King Catholic Church

Address: 1760 Nalabila Boulevard  
Phone: 250-632-2215

### Church of Jesus Christ of Latter-Day Saints

Address: 823 Kuldo Boulevard  
Phone: 250-632-4720

### First Baptist Church

Address: 840 Columbia Avenue  
Phone: 250-632-6014

### Haisla United Church

Address: 137 Owekeno St - Kitamaat Village  
Phone: 250-632-2555

### Kitimat First United Church

Address: 1180 Kingfisher Avenue  
Phone: 250-632-7149

### Kitimat Mountain View Alliance Church

Address: 1332 Lahakas Boulevard North  
Phone: 250-632-4658

### Kitimat Pentecostal Fellowship

Address: 1340 Kingfisher Avenue  
Phone: 250-632-5623

### Kitimat Presbyterian Church

Address: 1274 Nalabila Boulevard  
Phone: 250-632-2044

### Pacific Cornerstone Baptist Church

Address: 2109 Forest Avenue  
(downstairs in the Chamber of Commerce)  
Phone: 250-639-7711

### Redeemer Lutheran Church

Address: 1474 Nalabila Boulevard  
Phone: 250-632-6962

## OTHER FAITH-BASED COMMUNITIES

### Kitimat Sikh Society

Address: 1600 Nalabila Boulevard  
Phone: 250-632-4350

### Kitimat Kingdom Hall of Jehovah's Witness

Address: 134 Baxter Avenue  
Phone: 250-632-3573

### Kitimat Islamic Center

Address: 1274 Nalabila Blvd  
Phone: 403-354-2246

# LIFE IN NORTHWEST BC

## A region that offers everything you need

Kitimat has countless attractions and amenities making it an ideal place to call home. Adding to the appeal of the community is the region in which it is situated. Northwest BC is a spectacular backdrop for you to build the next phase in your life's adventure. The region is truly remarkable in its synergistic offerings of vast pristine wilderness and desirable modern-day amenities.

### Northwest BC Highlights

#### HEALTHCARE

- Four hospitals in the region and a number of health and wellness centres in smaller communities with physicians to provide basic and follow-up care.
- Over 26 resident and visiting specialists within the region.
- New, state of the art hospital in Terrace that includes a trauma center.
- Oncology, dialysis & MRI services in place.

#### NATURE & OUTDOOR ADVENTURE

- Over 10 million hectares of some of the most picturesque and sublime nature vistas in the province filled with mountains, ocean, rivers and lakes.
- World-class skiing and snowboarding, hiking, fishing, camping, kayaking, mountain biking and plenty of clubs and community groups for all adventure enthusiasts.

#### EDUCATION

- University of Northern British Columbia (UNBC) has specialized satellite campuses and facilities throughout the region.
- Coast Mountain College (formerly Northwest Community College) offers a different selection of learning opportunities, including many trade options.
- A mix of public, private and religious schools from elementary to high school, including full French immersion, depending on the community.

#### AMENITIES

- Northwest Regional Airport Terrace-Kitimat is a modern, newly renovated and expanded airport offering several flights a day throughout the province
- High-speed internet is becoming standard throughout the region. Advocacy work is underway to ensure broadband and cellular service is available to all residents and businesses of the region.

# KEY Northwest BC CITIES THAT ARE CLOSE TO KITIMAT

## Terrace

**Snapshot:** Located along the mighty Skeena River, the second largest river in British Columbia, Terrace is surrounded by mountain peaks, rivers, lakes, and wildlife.

**Popular Activities:** Shopping, hiking, single-track mountain biking, fishing, downhill and backcountry skiing, snowmobiling, and Riverboat Days.

**Amenities:** Airport, dining and restaurant options, a wide range of retail shopping options, farmers market, art galleries, and Shames Mountain Resort.

**Dist. from Kitimat** 60 km = 45 min drive

## Prince Rupert

**Snapshot:** A coastal port city nestled into a mountain, surrounded by the Great Bear Rainforest, and just a boat ride away from where you can spot grizzly bears, wolves, orcas and humpbacks.

**Popular Activities:** Ocean fishing, boating and seaplane tours, wildlife viewing, kayaking, hiking, arts and culture tours, and Sea Fest.

**Amenities:** Port, marinas, airport, dining and restaurant options, waterfront boardwalk with shopping, art galleries, and the Museum of Northern BC.

**Dist. from Kitimat** 205 km = 2h 15 min drive

## The Hazeltons

**Snapshot:** A cluster of three unique communities situated in the culturally significant Kispiox Valley, the Hazeltons offer a fascinating mix of diverse historical cultures and stunning mountain landscapes.

**Popular Activities:** First Nations historical sites, fishing, hiking, single-track mountain biking, snowmobiling, hunting, agriculture tours, sightseeing, and the Kispiox Music Festival.

**Amenities:** 'Ksan historical village, Hagwilget suspension bridge, Kispiox totem poles, historic downtown, and farmers market.

**Dist. from Kitimat** 200 km = 2h 15 min drive

## Smithers

**Snapshot:** Located at the base of stunning Hudson Bay Mountain, Smithers offers outstanding year-round outdoor recreational pursuits coupled with cultural offerings.

**Popular Activities:** Fishing and hunting, downhill, backcountry, and cross-country skiing, mountain biking, golfing, snowmobiling, canoeing and kayaking, shopping, and live music.

**Amenities:** Merchant focused downtown, dining and restaurant options, airport, art galleries, museum, farmer's market, Hudson's Bay Mountain Resort, Hankin-Evelyn Backcountry Ski Area.

**Dist. from Kitimat** 260 km = 2h 45 min drive

LEARN MORE AT [LIVENORTHWESTBC.CA](http://LIVENORTHWESTBC.CA)

# Noteable Regional Events & Celebrations

Throughout the year, you can experience various events and celebrations that happen in Northwest BC. The most popular are:



## RAIL JAM

**ABOUT:** This family event takes place at the Hirsch Creek Golf & Winter Club and features snowboarding, skiing, bonfires, music and more.

**WHERE:** Kitimat

**WHEN:** January or February (based on snow)

**MORE INFO:** [hirschcreekclub.com](http://hirschcreekclub.com)

## ALL NATIVE BASKETBALL TOURNAMENT

**ABOUT:** Annual tournament that brings players from across the province and has 4 divisions

**WHERE:** Prince Rupert

**WHEN:** February

**MORE INFO:** [anbt.ca](http://anbt.ca)

## CHILDREN'S FESTIVAL

**ABOUT:** Children's Festival is a fun filled day full of activities for the whole family to enjoy. Some of the key activities offered are: live performances, storytelling, wall climbing and more.

**WHERE:** Prince Rupert

**WHEN:** March

**MORE INFO:** [prspecialevents.com](http://prspecialevents.com)

## KITAMAAT OPEN BASKETBALL TOURNAMENT

**ABOUT:** 17 year annual basketball tournament organized by the DOK and HNC with donations from community businesses;

**WHERE:** Kitamaat Village, Kitimat

**WHEN:** April

**MORE INFO:** [haisla.ca](http://haisla.ca)

## SPRING CRAFT FAIR

**ABOUT:** The annual spring craft fair provide a venue for all home-based businesses, including artisans and crafters, to promote and sell their merchandise.

**WHERE:** Kitimat

**WHEN:** April

**MORE INFO:** [kitimat.ca](http://kitimat.ca)

## PACIFIC NORTHWEST MUSIC FESTIVAL

**ABOUT:** This 17-day festival offers an opportunity to watch music and dance performances from talented locals.

**WHERE:** Terrace

**WHEN:** April & May

**MORE INFO:** [pnmf.ca](http://pnmf.ca)

## SEAFEST

**ABOUT:** Seafest is Prince Rupert's largest festival held annually since 1978. Three days packed with events, activities, food booths, and entertainment in downtown and on the waterfront.

**WHERE:** Prince Rupert

**WHEN:** Second weekend of June

**MORE INFO:** [prspecialevents.com](http://prspecialevents.com)

## CANADA DAY CELEBRATIONS

**ABOUT:** You can find various activities on Canada Day, ranging from live music, games, multicultural food vendors, scavenger hunt, curbside water fight and more.

**WHERE:** Kitimat

**WHEN:** July 1, Canada Day

**MORE INFO:** [kitimat.ca](http://kitimat.ca)

## HARLEY RIDERS ANNUAL TOY RUN

**ABOUT:** Bikers from all along Highway 16 get together to ride along the roads of Prince Rupert and Port Edward. The event raises money, food and toys for the Salvation Army.

**WHERE:** Prince Rupert

**WHEN:** September

**MORE INFO:** Prince Rupert Harley Riders (Facebook group)

## KITIMAT FISH DERBY

**ABOUT:** This annual event brings fishing enthusiasts in from all over Northwest BC. There are adult and youth categories with thousands of dollars in cash and prizes.

**WHERE:** Kitimat

**WHEN:** Labour Day weekend

**MORE INFO:** [kitimatchamber.ca](http://kitimatchamber.ca)

## RIVERBOAT DAYS

**ABOUT:** Riverboat Days is the largest community festival in Northwest BC and offers huge variety, from interpretive walks, to sports tournaments, to live music.

**WHERE:** Terrace

**WHEN:** August long weekend

**MORE INFO:** [riverboatdays.ca](http://riverboatdays.ca)

## WINTER CRAFT FAIR

**ABOUT:** The annual winter craft fair provide a venue for all home-based businesses, including artisans and crafters, to promote and sell their merchandise.

**WHERE:** Kitimat **WHEN:** November

**MORE INFO:** [kitimat.ca](http://kitimat.ca)

## WINTERFEST

**ABOUT:** Winterfest is a two day festival where you can enjoy various activities such as live music, Santa Claus parade, arts and crafts fair, skating and more.

**WHERE:** Prince Rupert

**WHEN:** First weekend of December

**MORE INFO:** [prspecialevents.com](http://prspecialevents.com)



# Stay Connected With Kitimat

## District of Kitimat

Instagram - @districtofkitimat  
Facebook - @kitimatdistrict  
YouTube - District of Kitimat

## Tourism Kitimat

Instagram - @tourismkitimat  
Facebook - @visitkitimat

## Keep it Local Kitimat

Keep it Local Kitimat is a program open to all local businesses to promote economic benefits of local spending for residents and businesses.

Learn more about the program at [bcbuylocal.com/communities/kitimat](http://bcbuylocal.com/communities/kitimat)

Instagram - @keepitlocalkitimat  
Facebook - Keep it Local Kitimat

**FIND MORE AT [KITIMATBOUND.CA](http://KITIMATBOUND.CA)**